

APPARTAMENTO N.4 - PT-P1-P2

S.U.L. 180,5 m²

Accessori PT = 50 m²

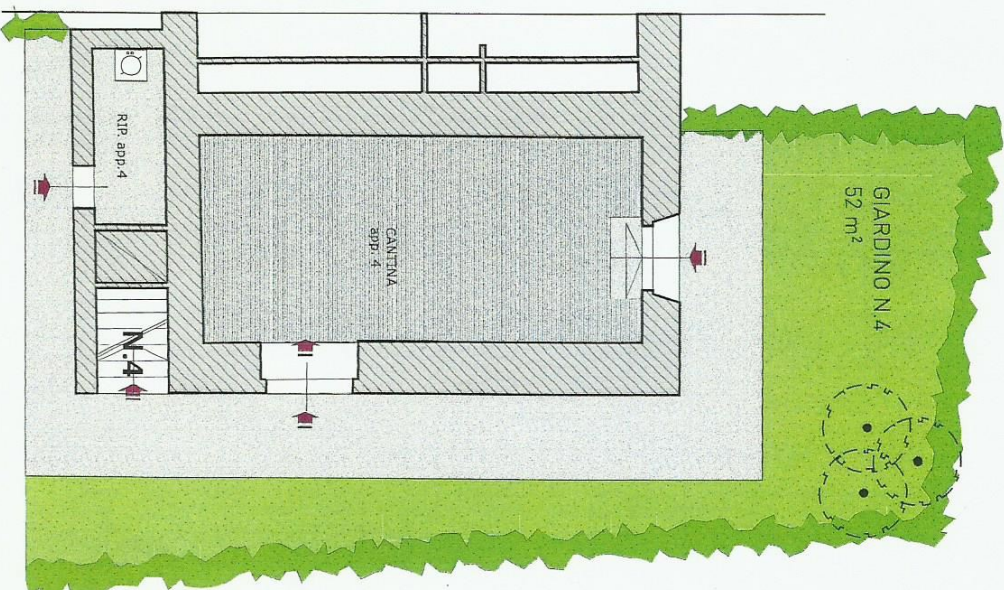
Giardino 52 m²

Impianto idrotermosanitario autonomo

Predisposizione aria condizionata

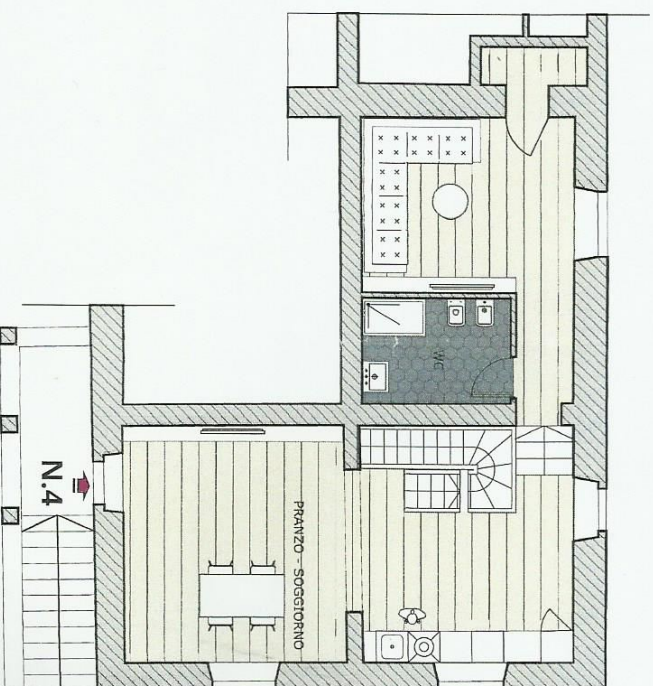
Parcheggio

Ampio spazio verde a comune



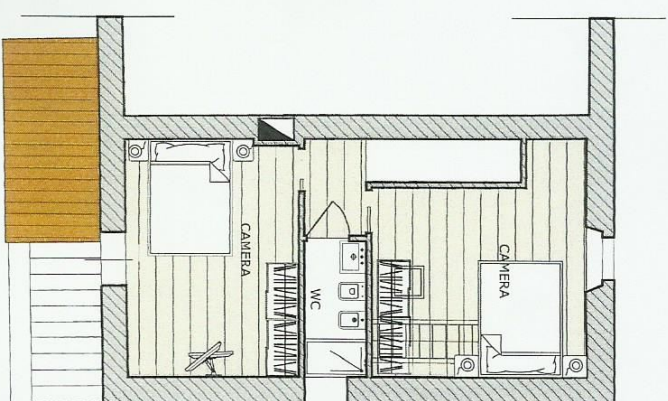
PIANTA PIANO TERRA

S.U.L. = 50 m²



PIANTA PIANO PRIMO

S.U.L. = 80,3 m²



PIANTA PIANO SOTTOTETTO

S.U.L. = 50,2 m²